



Business Year Product Sales Comparisons

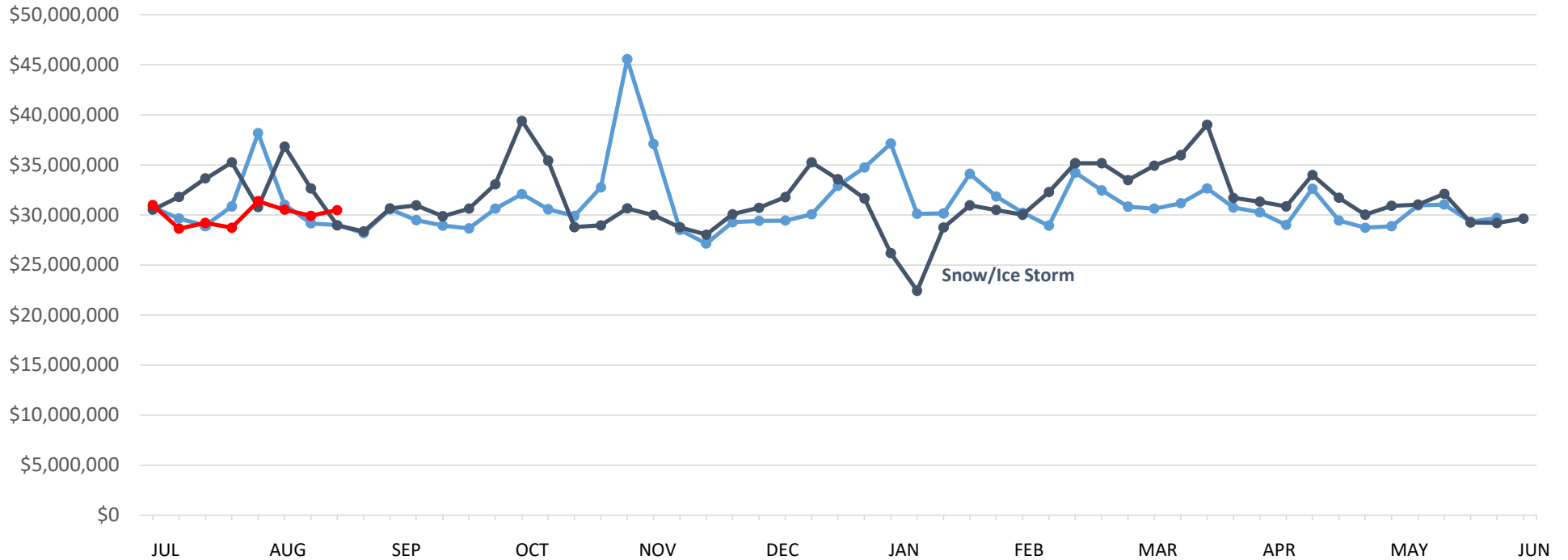
Business Years 2023, 2024, and 2025

As of Business Week 8, ending Saturday, August 24, 2024



Oregon Lottery | Business Years 2023 through 2025

— 2023 — 2024 — 2025



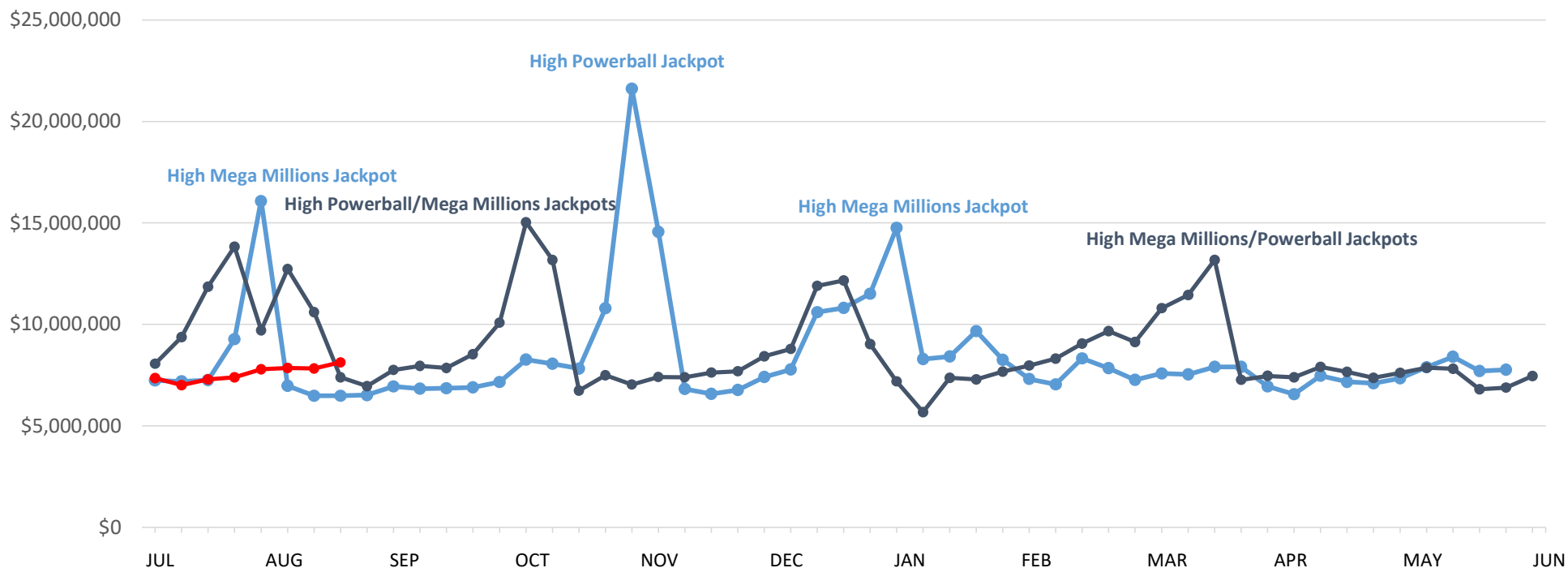
| | This Year | Last Year | Difference | % Change |
|---------------|---------------|---------------|---------------|----------|
| Year to Date: | \$239,851,713 | \$260,482,293 | -\$20,630,581 | -7.9% |

As of Business Week 8, ending Saturday, August 24, 2024



Traditional Products | Business Years 2023 through 2025

—●— 2023 —●— 2024 —●— 2025



Note: Includes Powerball, Mega Millions, Oregon's Game Megabucks, Scratch-its, Keno, Win For Life, Pick 4, Lucky Lines, and Raffle

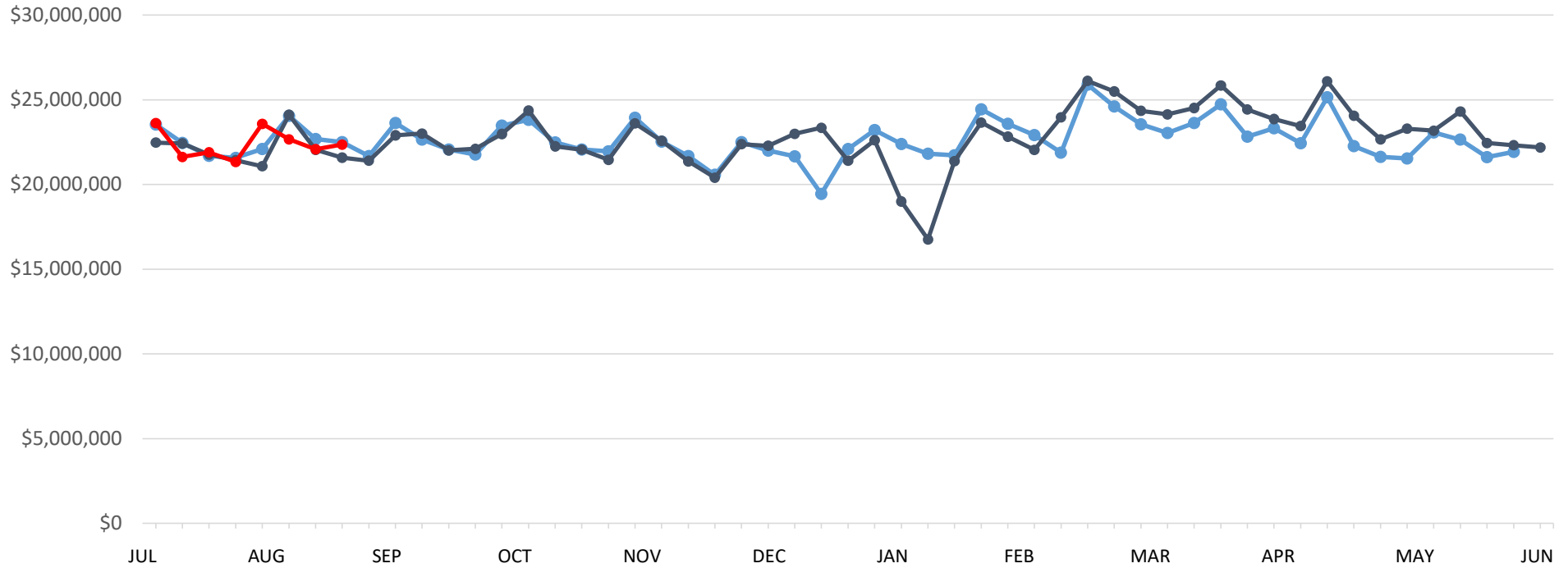
| | This Year | Last Year | Difference | % Change |
|---------------|--------------|--------------|---------------|----------|
| Year to Date: | \$60,701,565 | \$83,591,680 | -\$22,890,116 | -27.4% |

As of Business Week 8, ending Saturday, August 24, 2024



Video Lottery | Business Years 2023 through 2025

— 2023 — 2024 — 2025



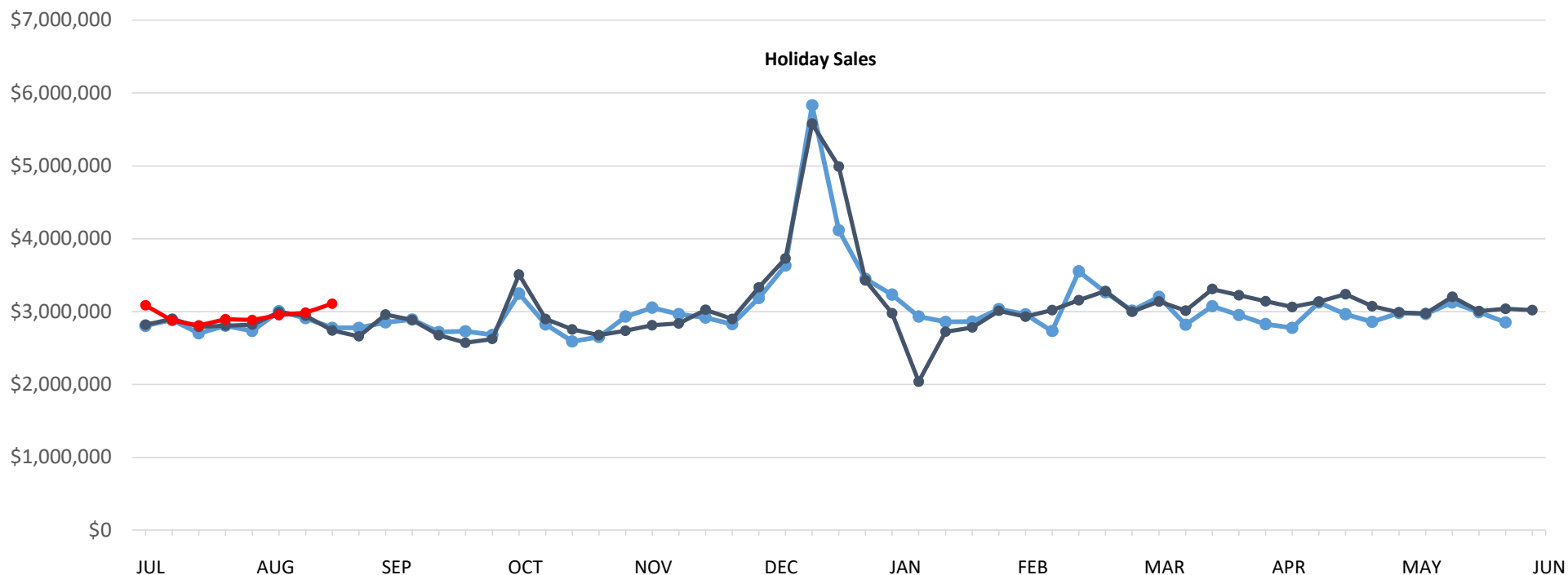
| | This Year | Last Year | Difference | % Change |
|---------------|---------------|---------------|-------------|----------|
| Year to Date: | \$179,150,148 | \$176,890,613 | \$2,259,535 | 1.3% |

As of Business Week 8, ending Saturday, August 24, 2024



Scratch-its | Business Years 2023 through 2025

—●— 2023 —●— 2024 —●— 2025



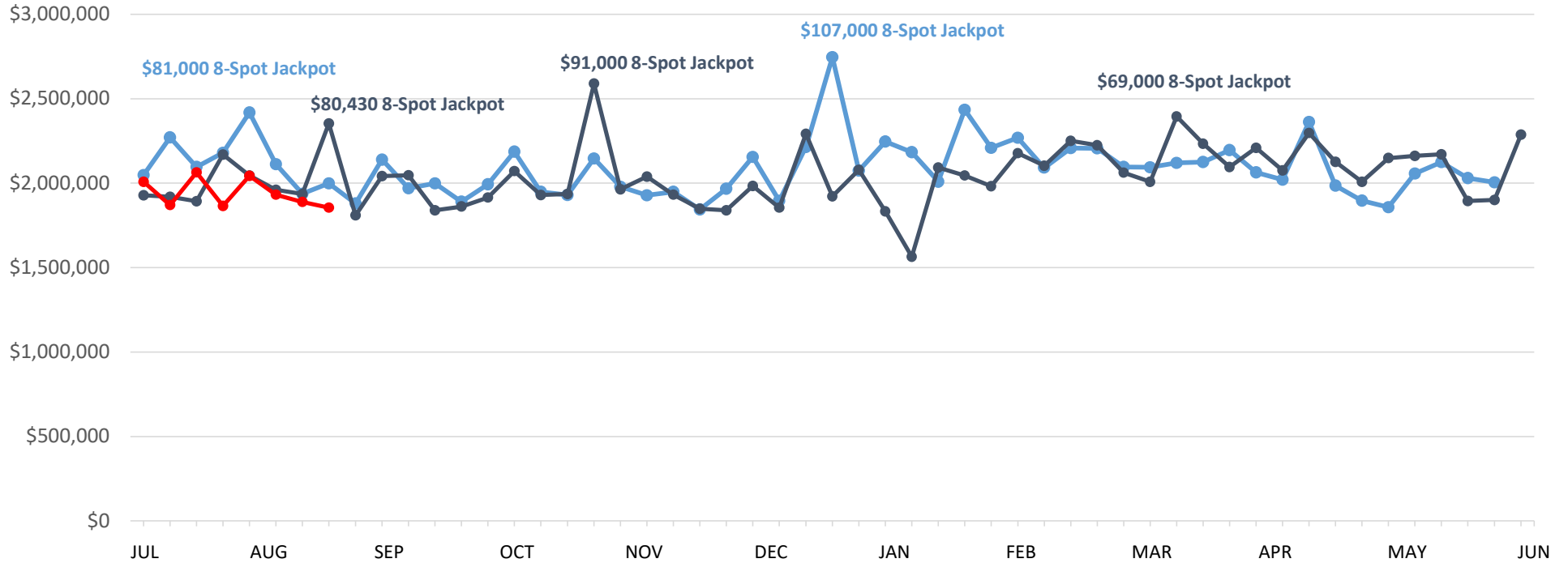
| | This Year | Last Year | Difference | % Change |
|---------------|--------------|--------------|------------|----------|
| Year to Date: | \$23,600,095 | \$22,819,273 | \$780,822 | 3.4% |

As of Business Week 8, ending Saturday, August 24, 2024



Keno | Business Years 2023 through 2025

—●— 2023 —●— 2024 —●— 2025



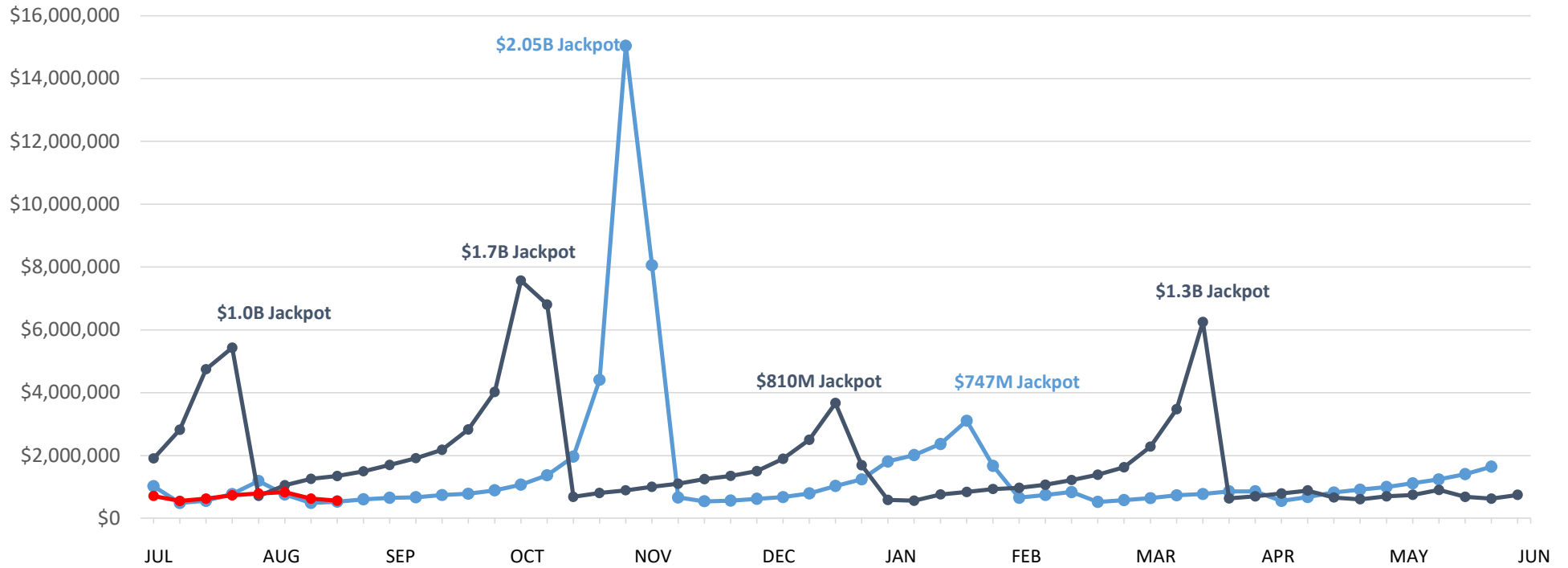
| | This Year | Last Year | Difference | % Change |
|---------------|--------------|--------------|------------|----------|
| Year to Date: | \$15,529,665 | \$16,206,558 | -\$676,893 | -4.2% |

As of Business Week 8, ending Saturday, August 24, 2024



Powerball | Business Years 2023 through 2025

— 2023 — 2024 — 2025



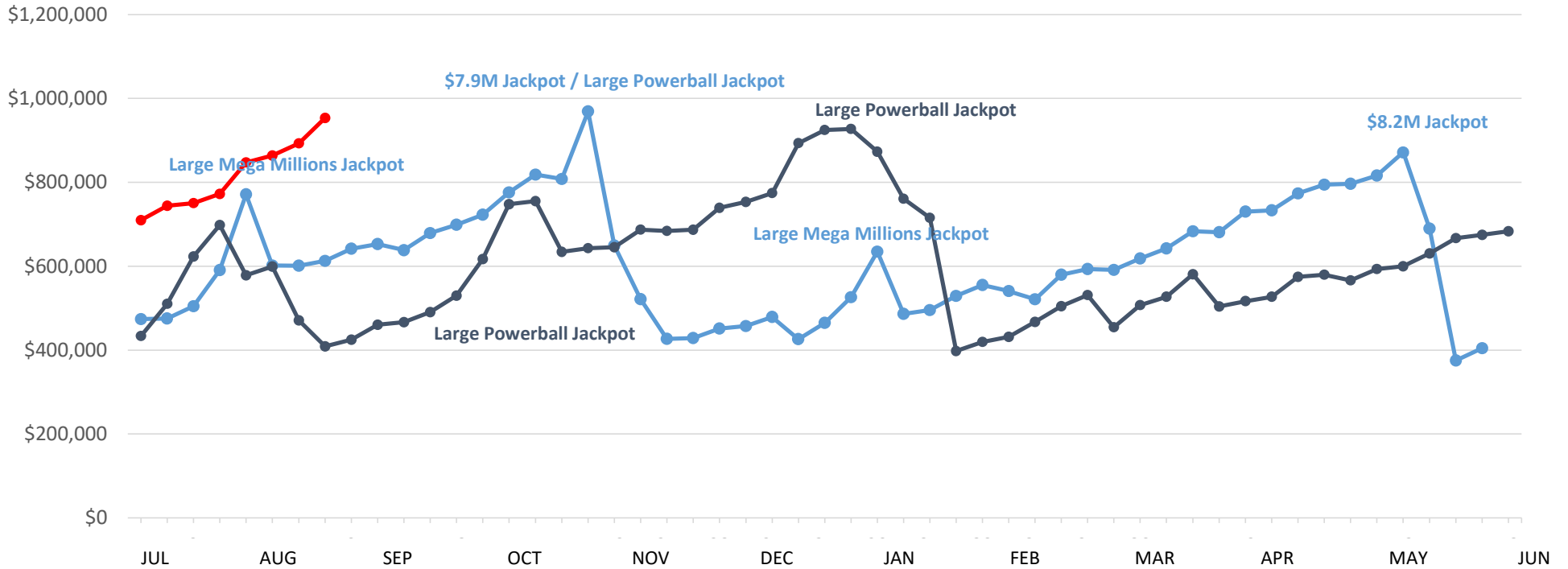
| | This Year | Last Year | Difference | % Change |
|---------------|-------------|--------------|---------------|----------|
| Year to Date: | \$5,417,411 | \$19,258,344 | -\$13,840,933 | -71.9% |

As of Business Week 8, ending Saturday, August 24, 2024



Megabucks | Business Years 2023 through 2025

—●— 2023 —●— 2024 —●— 2025

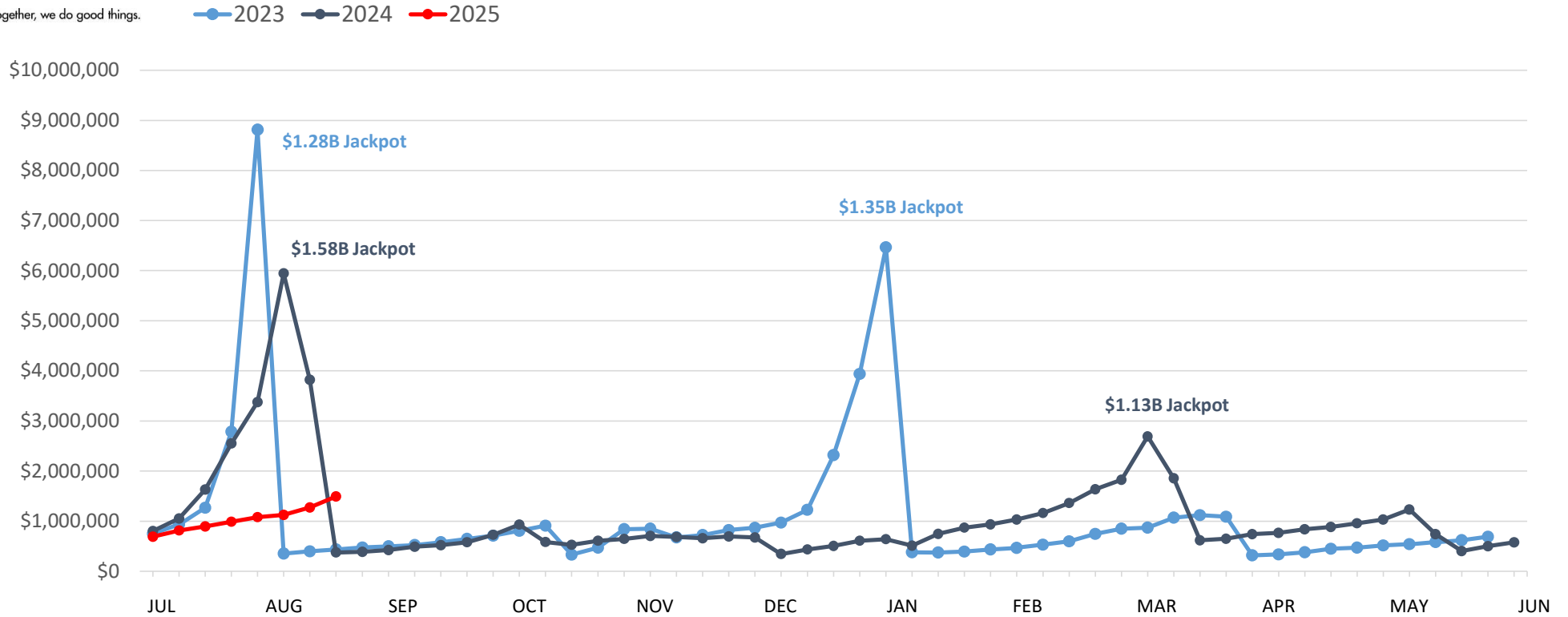


| | This Year | Last Year | Difference | % Change |
|---------------|-------------|-------------|-------------|----------|
| Year to Date: | \$6,535,183 | \$4,323,077 | \$2,212,106 | 51.2% |

As of Business Week 8, ending Saturday, August 24, 2024



Mega Millions | Business Years 2023 through 2025



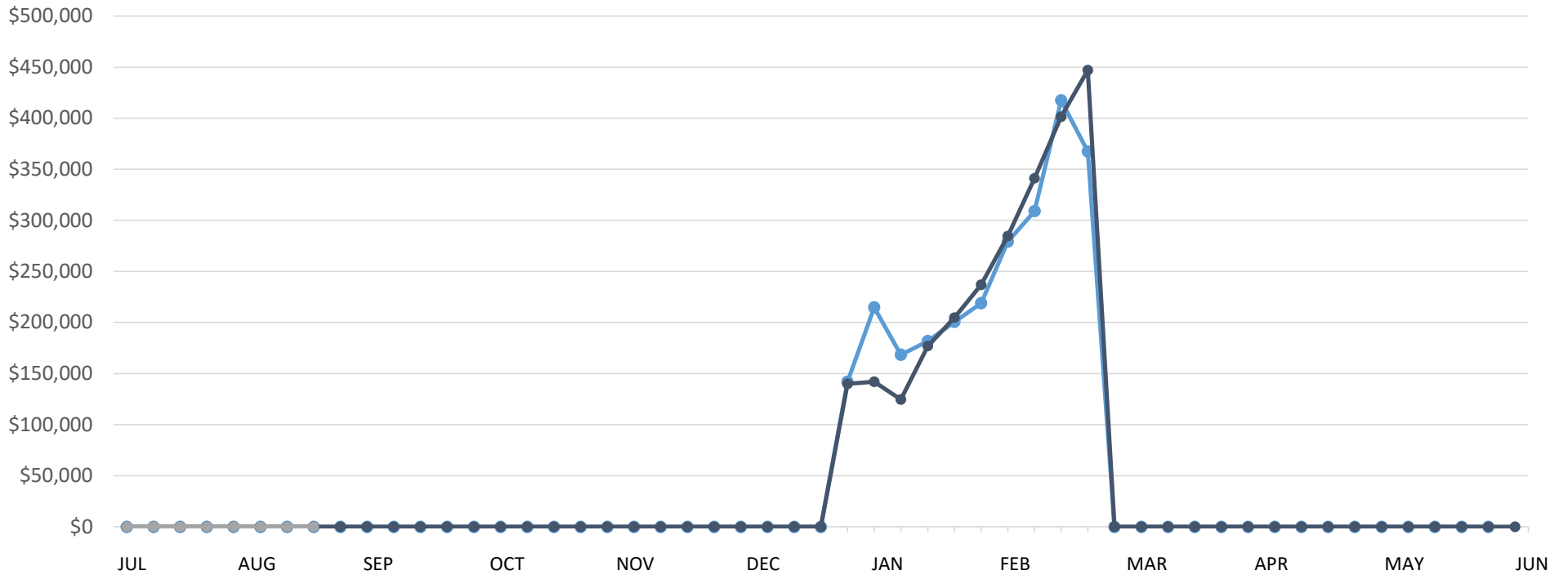
| | This Year | Last Year | Difference | % Change |
|---------------|-------------|--------------|---------------|----------|
| Year to Date: | \$8,374,900 | \$19,572,649 | -\$11,197,749 | -57.2% |

As of Business Week 8, ending Saturday, August 24, 2024



Raffle | Business Years 2023 through 2025

2023 2024 2025



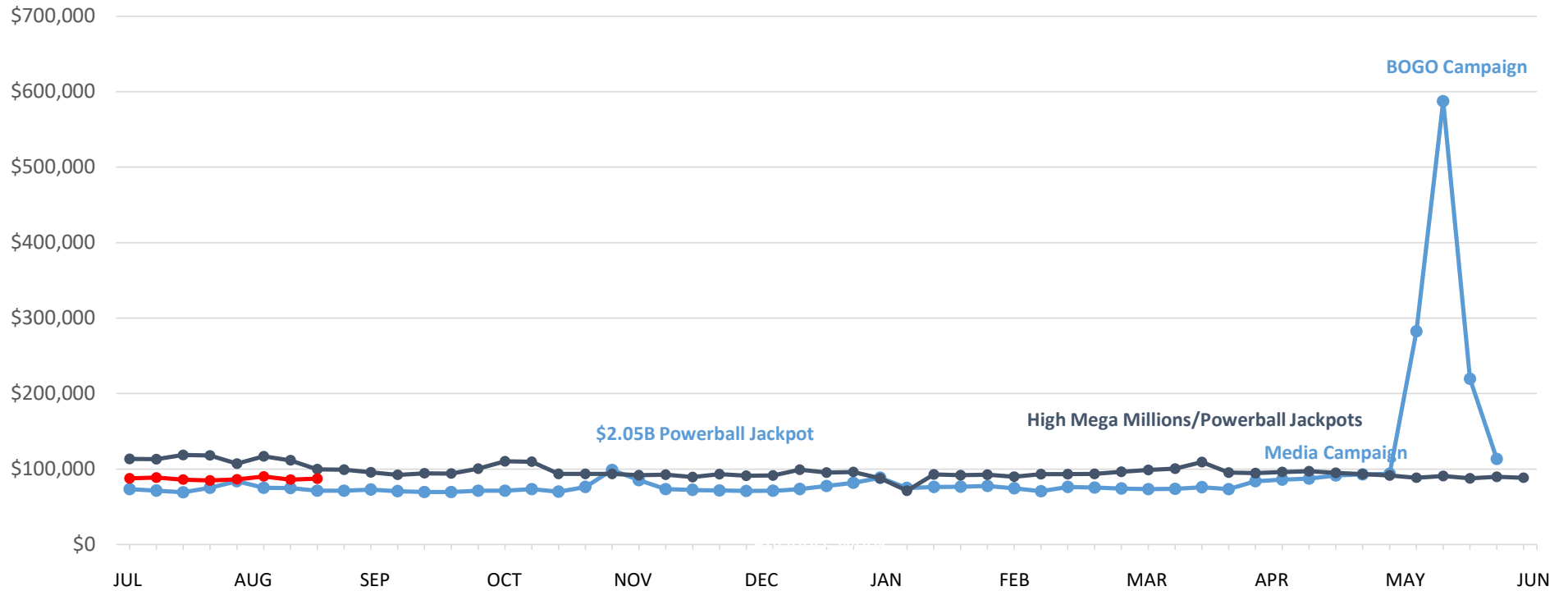
| | This Year | Last Year | Difference | % Change |
|---------------|-----------|-----------|------------|----------|
| Year to Date: | \$0 | \$0 | \$0 | - |

As of Business Week 8, ending Saturday, August 24, 2024



Win for Life* | Business Years 2023 through 2025

—●— 2023 —●— 2024 —●— 2025



* Sales include free BOGO tickets

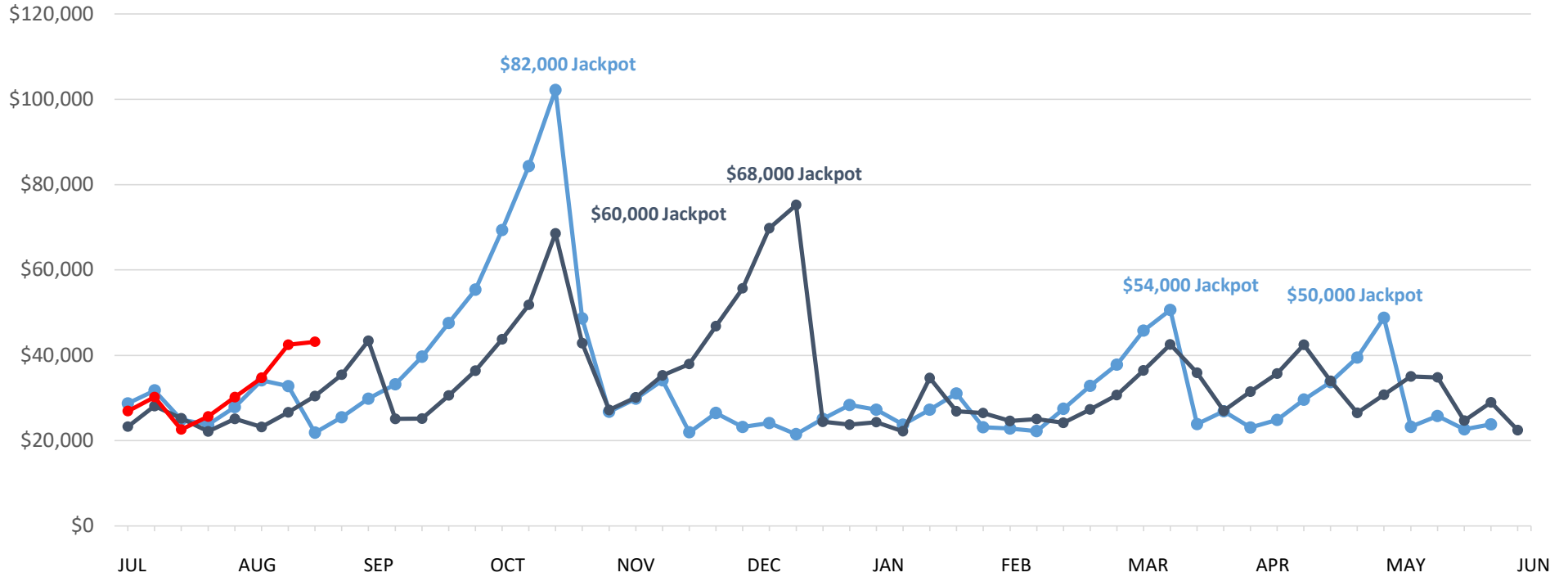
| | This Year | Last Year | Difference | % Change |
|---------------|-----------|-----------|------------|----------|
| Year to Date: | \$696,984 | \$897,672 | -\$200,688 | -22.4% |

As of Business Week 8, ending Saturday, August 24, 2024



Lucky Lines | Business Years 2023 through 2025

—●— 2023 —●— 2024 —●— 2025



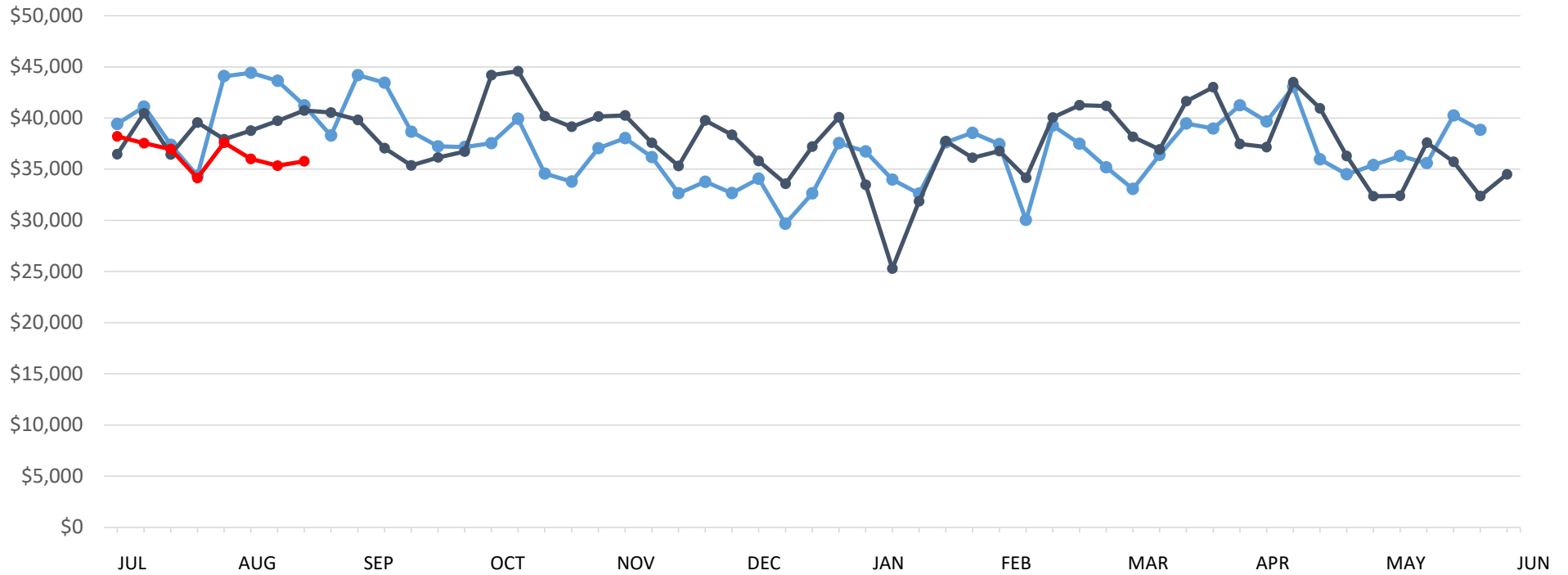
| | This Year | Last Year | Difference | % Change |
|---------------|-----------|-----------|------------|----------|
| Year to Date: | \$255,804 | \$204,028 | \$51,776 | 25.4% |

As of Business Week 8, ending Saturday, August 24, 2024



Pick 4 | Business Years 2023 through 2025

—●— 2023 —●— 2024 —●— 2025



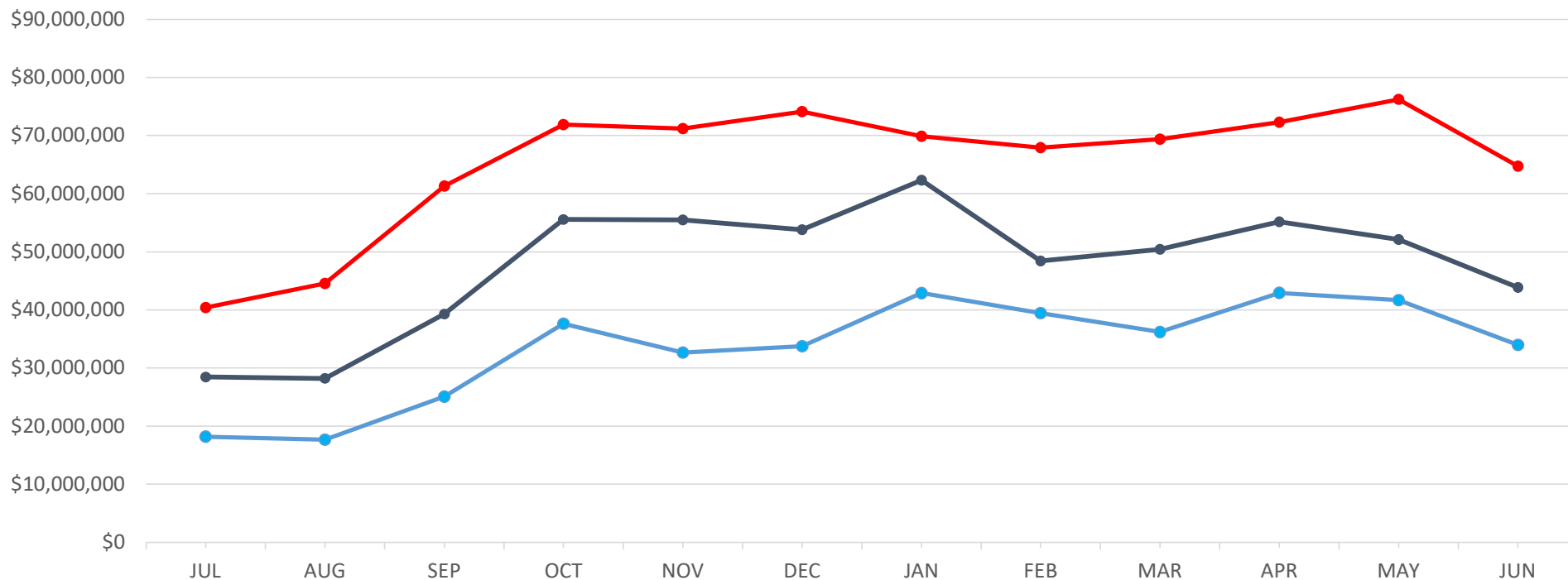
| | This Year | Last Year | Difference | % Change |
|---------------|-----------|-----------|------------|----------|
| Year to Date: | \$291,523 | \$310,079 | -\$18,557 | -6.0% |

As of Business Week 8, ending Saturday, August 24, 2024



Sports Turnover* | Business Years 2023 through 2025

—●— 2022 —●— 2023 —●— 2024



* Turnover equals total amount wagered (aka "Handle")

| | This Year | Last Year | Difference | % Change |
|---------------|--------------|--------------|--------------|----------|
| Year to Date: | \$53,280,682 | \$40,428,203 | \$12,852,479 | 31.8% |

Sport's revenue is reported at month's end